

max
4000



min. 4250*

* Technical data and features subject to change without notice

Pumping unit technical data

		PB607S7
Max. theoretical output	m ³ /h	61
Max. pressure on concrete	bar	71
Max. number of cycles per minute	N°	32
Concrete cylinders (diam. x stroke)	mm	200 x 1000
Concrete hopper capacity	l	400
"S" valve diameter	"	7

Total weight lower than 32.000 kg.

Boom: 4 sections, pipeline diameter 100 mm, "Z" folding system.

Wide range of truck chassis compatibility: 3 and 4 axles with different wheelbase.

Control system with pumping unit PB607S7

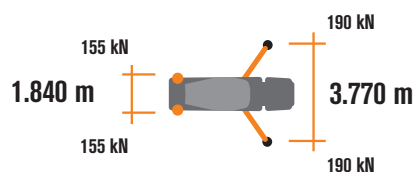
Easytronic

- Colour LCD display
- Pumping unit & drum management
- Diagnostics
- Counters

Control systems options



The LSC advanced limits the boom rotation to ensure machine stability whenever any front outrigger cannot be fully extended. Machine-front working is possible rotating the boom-pack vertically, with just 10% front outriggers opened.



Concrete Mixer Technical data

		RH80
Nominal capacity	m ³	7
Drum geometric volume	m ³	12,8
Filling ratio	%	55
Max. drum speed	rpm	14
Water tank capacity	l	600
Water tank capacity/pressure	l/min - bar	230/15
Liter-counter scale	l	0-500

Placing boom technical data

		MK24L
Pipeline diameter	mm	100
Max. vertical reach	m	23,15
Max. horizontal distance	m	19,15
Sections number		3
1st section opening angle		108°
2nd section opening angle		180°
3rd section opening angle		184°
Rotating angle		+/- 240°
End hose length	m	4



STEELTECH Series

MK24L

Placing boom MK24L

Standard equipment

Compact and harmonic line, studied for advantageous assembling on 3/4 axles (RH 80)

Ideal loads distribution on the axles to obtain better driving stability

Self-supporting frame - torsion free FEM designed

Outriggers fully hydraulic controlled on both machine sides

High loading and mixing capacity drum and elliptic bottom

Placing boom MK24L, 3 sections, pipeline diameter 100 mm, "Z" folding system

Proportional boom control allowing the operator to control more placing boom sections simultaneously

Concrete flow rate regulator

Quiet pumping with high performances: smooth, continuous and easy movements

Safety device on opening inspection hatch

Two proportional radio remotes Hetronic with two boom movement speed, synthesiser for automatic frequency search, 8 position joystick and concrete flow rate regulator. 20 mt cable

Two zinc-coated additional chutes, with supports for their fixing on counterframe

Remote controlled vibrator on the concrete hopper grid

Centralized lubrication system for pumping unit

Automatic lubrication system for pumping pistons by hydraulic oil

Additional manual lubrication system for pumping unit

Hard plastic outrigger support plates with relevant housing

Rear light on hopper

Polymer rear mono-axle mudguards with rubber mudflaps

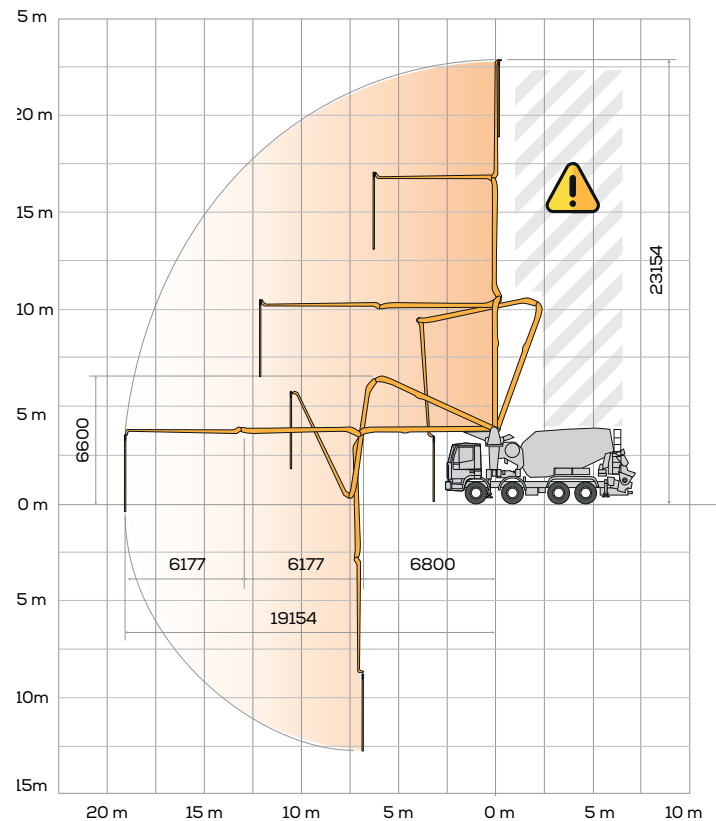
Accessories for cleaning and pipes washing

Automatic concrete discharging control with hopper concrete level sensor

Pumping unit with 7 inches "S" shaped valve

Double thickness concrete pipes, in high resistant steel and insert carbide chrome - CIFA Long Life Pipes

Long life wear plate and cutting ring with hard carbide inserts



Options

LSC advanced - Light Stability Control

Fiber-glass hopper cover

2 HBC Radio remote control, in place of the Hetronic supplied as standard

Placing boom continuous rotation (not available with LSC)

High pressure water pump + manual washing gun + cable retractor reel

"Ekos" dust blocking device for drum closing

Concrete shut-off valve

Aluminum hose/pipe holder on both sides (PB 607 S7)

Hydraulic pipeline emergency kit

Video Smartronic

