



* Technical data and features subject to change without notice

Pumping unit technical data

		PB607CCEPC
Max. theoretical output	m ³ /h	61
Max. pressure on concrete	bar	71
Max. number of cycles per minute	n°	32
Concrete cylinders (diam. x stroke)	mm	200x1000
Concrete hopper capacity	l	400
"S" valve diameter	"	7

Control system with pumping unit PB607CCEPC

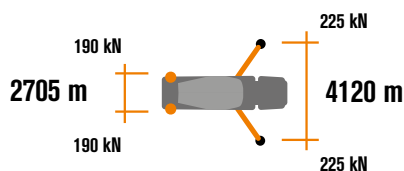
Smartronic

- Colour LCD display
- Counters
- Pumping unit & drum management
- Advanced diagnostics
- Capsense rear control panel

Control systems options



The LSC advanced limits the boom rotation to ensure machine stability whenever any front outrigger cannot be fully extended. Machine-front working is possible rotating the boom-pack vertically, with just 10% front outriggers opened.



Battery

Technology	Lithium-ion
Voltage	288 V
Capacità	36 kWh / 125Ah

Charging mode

Standard charging mode	Single phase 220V – 16A
High speed charging mode	400Vac (Three phase) – 35kW

Concrete Mixer Technical data

		RH80
Nominal capacity	m ³	7
Drum geometric volume	m ³	12,8
Filling ratio	%	55
Max. drum speed	rpm	14
Pressurized water tank capacity	l	600
Liter-counter scale	l	0-500

Placing boom technical data

		MK28H
Pipeline diameter	mm	100
Max. vertical reach	m	27,150
Max. horizontal distance	m	23,274
Sections number		4
1st section opening angle		90°
2nd section opening angle		180°
3rd section opening angle		260°
4th section opening angle		251°
Rotating angle		-240°/+ 240°
End hose length	m	4

MK28E



Standard equipment

Placing boom MK28E, 4 sections, pipeline diameter 100 mm, "Z" folding system

3rd and 4th boom sections made of light and resistant CIFA CARBOTECH composite material

Chassis at extremely high torsion absorption, calculated according to Finite Elemental Methods (FEM)

Great loading capacity drum with elliptic bottom, in high wear resistant steel of 450 HB (3mm)

600 Pressurized water tank

Aluminum hose/pipe holder on both sides with polymer rear mono-axle mudguards with rubber mudflaps

Boom control by proportional distributor

One proportional radio remote control Hetronic with display with 20 mt cable

One proportional radio remote control Hetronic without display with 20 mt cable

Vibrator on the concrete hopper grid with remote control

Centralized lubrication system for pumping unit

Oil automatic lubrication system for pumping pistons

Additional manual lubrication system for pumping unit

LED lights for pumping unit hopper

Accessories for cleaning and washing

Automatic adjustment feeler of truck-mixer discharge into hopper

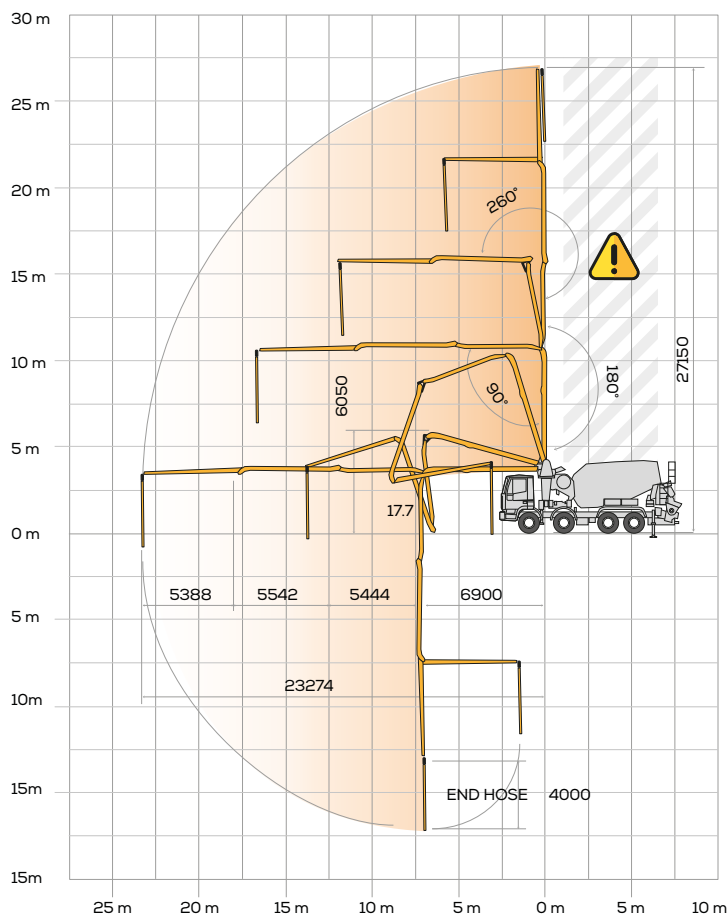
Concrete pipes on the frame in double thickness with chrome carbide inserts in high wear resistant CIFA Long Life Hard LLH

Concrete pipes on the boom in double thickness with chrome carbide inserts in high wear resistant CIFA Long Life Hard LLN

Long life wear plate and cutting ring with hard carbide inserts

Hopper cover and style covers made of fiberglass

Placing boom B5Z 27/23



Electro-hydraulic functions

Stabilization

Boom opening / closing

Pumping phase

Services

Video Smartronic

