



* Technical data and features subject to change without notice

Pumping unit technical data

		HP1808ECX
Max. theoretical output	m ³ /h	180
Max. pressure on concrete	bar	83
Concrete cylinders (diam. x stroke)	mm	260 x 2100
Concrete hopper capacity	l	600
Hydraulic circuit		closed

Advanced Stability Control is installed as standard

Carbon fiber technology for less weight, further reach and higher strength.

Total length less than 13.5 m

Control system

Smartronic gold

- ASC Advanced stability control
- Auto RPM engine speed adjustment
- Working ramps kit for the pumping unit
- LCD monitor
- Counters
- Pumping unit management
- Diagnostics
- Capsense rear control panel

ASC is standard equipment



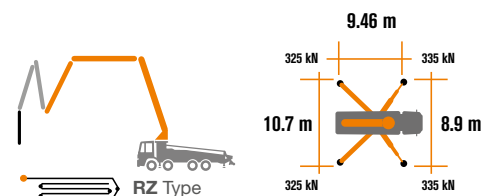
The automatic continuous verification of the center of gravity of the machine guarantees the maximum safety of boom movement and the maximum possible coverage of the job area, even with partial opening of the stabilization.



MBE
Maximum boom extension control



Automatic RPM Management



Placing boom technical data

		B5RZ 53/48
Pipeline diameter	mm	125
Max. vertical reach	m	52.1
Max. horizontal distance (from center of slewing axis)	m	47.1
Min. unfolding height	m	13.9
Sections number		5
1st section opening angle		90°
2nd section opening angle		180°
3rd section opening angle		180°
4th section opening angle		255°
5th section opening angle		210°
Rotating angle		+/-270°
End hose length	m	3



CARBOTECH Series K53H

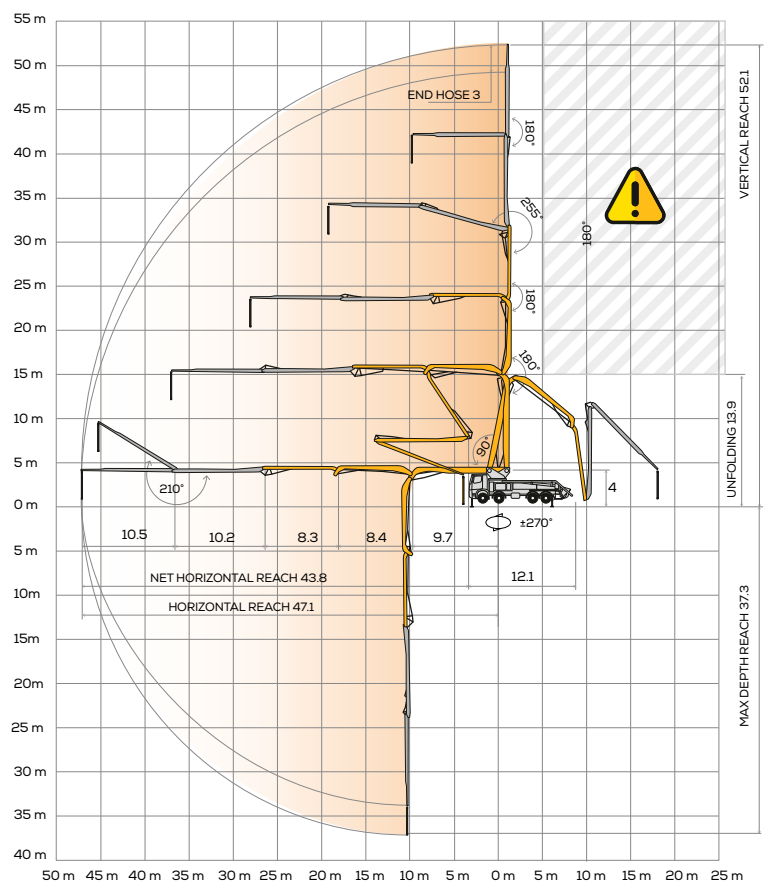
Standard equipment

- Placing boom B5HRZ 53/48, 5 sections, pipeline diameter 125 mm, "RZ" folding system
- 4th, 5th boom sections made of light and resistant CIFA CARBOTECH composite material. 1st, 2nd and 3rd sections made of high strength steel
- Assembly on 4 - 5 axles truck
- Fully hydraulic outrigger controls on both sides of the truck
- Front "X" style diagonal outriggers with double telescopic opening and swing-out rear outriggers
- Safety device on opening inspection hatch
- Pumping unit with closed loop HP1808ECX, 10 inch S valve
- 2 Proportional radio controls with 20 mt cable
- Double thickness boom straight pipes, in high resistant steel and insert carbide chrome - CIFA LLT Long Life Top
- Double thickness concrete pipes on the base, in high resistant steel and insert carbide chrome - CIFA Long Life Pipes
- High resistance plate and wear ring with chrome carbide inserts
- Remote controlled electric vibrator placed on the concrete hopper grid
- Centralized lubrication system for pumping unit
- Automatic oil lubrication system for pumping pistons
- Rear light on hopper
- Accessories for cleaning and pipes washing
- Fiber glass hopper covering
- Medium pressure water pump (50l/50bar)

Main Options

- High pressure water pump (15 l/min - 150 bar)
 - Air compressor for pipeline cleaning
 - Centralized lubrication system for placing boom
 - Air pipeline for placing boom
 - Separated emergency engine kit for independent control of the concrete pumping unit, boom and water pump
 - Smartronic Advanced: In addition to the Smartronic Gold functions, provides ASC2.0 stability control, ABC boom oscillation control (Antibouncing), automatic boom opening and closing. Includes radio remote control Hetronic or HBC with display
 - Concrete shut-off valve
 - Rear camera for easy manoeuvring
 - Proportional radio control with display
 - Wide choice of customer personalisation colours
- *Over 100 optionals available; see truck pumps optional booklet

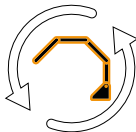
Distribution boom B5RZ 53/48



**Advanced
Stability Control
2.0**



Antibouncing



**Boom automatic
opening and closing**

Carbon Fiber Video Smartronic Video



CIFA S.p.A. / Via Stati Uniti d'America, 26 / 20030 SENAGO (MI) / ITALY
Tel. +39 02 990 131 / sales@cifa.com



cifa.com

